

VOL. 56 · JANUARY 2026

# CAPITAL PLACE NEWSLETTER

The Official Newsletter of Capital Place Jakarta



## CAPITAL PLACE Secret Santa 2026



## JANUARY 2026

- 01 Secret Santa 2026
- 03 New Year's Day: a moment for new beginnings
- 04 A New Mindset to face this year's challenges
- 05 Isra' Miraj : The Prophet Muhammad's Divine Journey
- 06 The Importance of Protecting Forests
- 07 HSE Bulletin : Safety Awareness At Work
- 08 What's in the Movie January 2026

# CAPITAL PLACE Secret Santa 2026



The Secret Santa was successfully held at CAPITAL PLACE on 11 December 2025



The **Secret Santa** event held at **Capital Place** was successfully carried out in the festive spirit of Christmas and the New Year 2026. Both staff and tenants enthusiastically participated in enlivening the celebration. This Secret Santa event was dedicated to **Yayasan Bina Remaja Kuat Beriku Hati** as part of Capital Place's social responsibility initiative, aiming to share the warmth of the Christmas celebration and to foster love and compassion for others.

The Secret Santa event featured a variety of engaging performances, starting with live music that accompanied the event from beginning to end, talent performances by the children from the orphanage, as well as gift exchange sessions conducted both directly and symbolically. Gifts were presented to the management or the head of the foundation as a form of appreciation and gratitude for their voluntary dedication in caring for and supporting the children at the orphanage.



This Secret Santa event is part of **Capital Place's** annual mandatory series of events held in celebration of Christmas and the New Year, featuring different themes each year. The Christmas theme for this year was Light and Gold, highlighted by Christmas decorations dominated by white and gold tones. This event also served as one of the opening celebrations for the year 2026, as well as a meaningful moment to strengthen relationships among staff and to fulfill social responsibility toward the surrounding community.

*“This Christmas, let us rejoice together, share kindness, and care for one another—because joy is greater when it is shared.”*

# NEW YEAR'S DAY: A MOMENT FOR NEW BEGINNINGS

Happy  
New Year  
2026

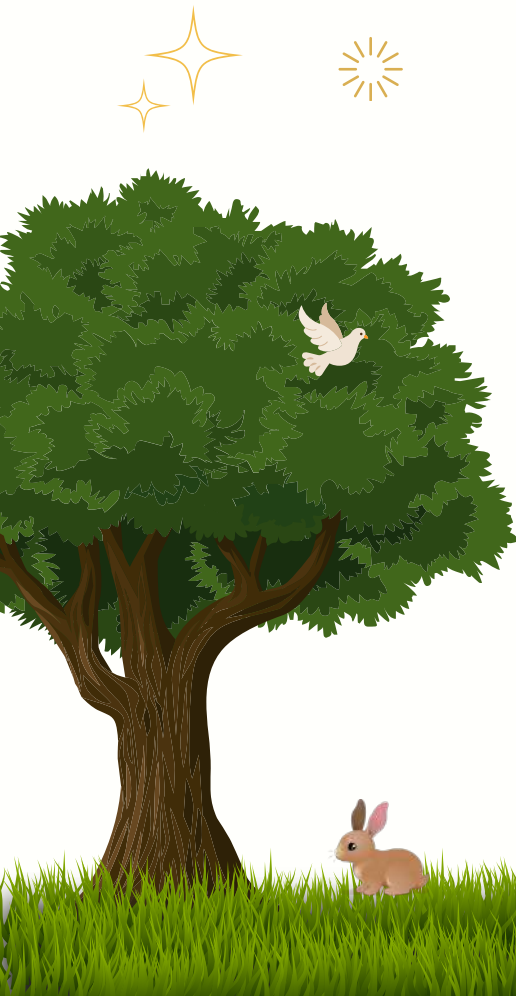
New Year's Day, celebrated on January 1st, marks the beginning of a new year in the Gregorian calendar. It is one of the most widely celebrated events in the world, symbolizing new beginnings, hope, and opportunities for positive change.

New Year's Day, celebrated on January 1st, marks the beginning of a new year in the Gregorian calendar. It is one of the most widely celebrated events in the world, symbolizing new beginnings, hope, and opportunities for positive change.

One important tradition associated with New Year's Day is making resolutions. Many people take this moment to reflect on their achievements and challenges from the previous year and set goals for self-improvement. Common resolutions include improving health, strengthening relationships, achieving career goals, and adopting better habits.

Beyond celebration, New Year's Day is also a time for reflection and renewal. It encourages individuals to leave behind past mistakes, learn from experiences, and move forward with a positive mindset. This spirit of renewal makes the New Year a meaningful moment for personal growth and motivation.

In conclusion, New Year's Day is more than just a change of date on the calendar. It is a universal celebration of hope, fresh starts, and the determination to create a better future. As a new year begins, it offers everyone the chance to embrace change and move forward with renewed purpose.



# A NEW MINDSET TO FACE THIS YEAR'S CHALLENGES

The beginning of a new year often comes with new challenges and opportunities. To face them effectively, adopting a fresh and positive mindset is essential. Rather than fearing change, we can view it as a chance to grow and learn. Building resilience helps us stay strong during difficult times. Challenges may slow us down, but they also offer valuable lessons that shape personal growth. By focusing on progress instead of perfection, we can remain motivated and move forward with confidence.

## HERE'S A TIPS TO FACING THIS YEAR'S CHALLENGES EFFECTIVELY

### Embrace Change

accepting and adapting positively to new situations or transformations.



### Build Resilience

developing the ability to adapt, recover, and grow stronger from challenges.



### Set Realistic Goals

establishing achievable and practical objectives based on current capabilities and resources.



### Practice Gratitude

consistently recognizing and appreciating the positive aspects of life.



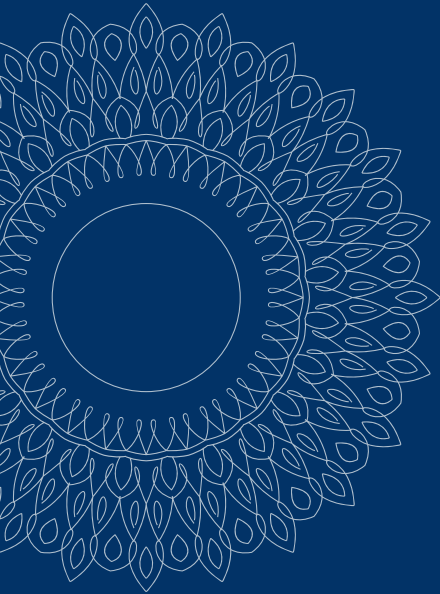
# ISRA' MI'RAJ: THE PROPHET MUHAMMAD'S DIVINE JOURNEY

**Isra Miraj** is a significant event in Islamic history that commemorates the miraculous night journey of Prophet Muhammad (PBUH). In one night, the Prophet traveled from Al-Masjid Al-Haram in Makkah to **Al-Masjid Al-Aqsa in Jerusalem (Isra)**, and then ascended through the heavens to **Sidrat al-Muntaha (Miraj)**.

This event reflects deep faith, perseverance, and the closeness of a servant to Allah. One of the greatest lessons from Isra Miraj is the obligation of the five daily prayers, which serve as a core act of worship for Muslims.

The commemoration of Isra' Mi'raj usually involves prayers, voluntary worship, sermons, and other religious activities. It is a moment for reflection, spiritual growth, and emulating the character of the Prophet Muhammad (peace be upon him) in daily life.

Understanding Isra' Mi'raj reminds Muslims that life's challenges are part of the spiritual journey toward Allah. It teaches patience, dedication, and obedience, serving as a guide for living a righteous and faithful life.



# The Importance of Protecting Forests

**Forests are essential for life on Earth** because they produce oxygen, absorb carbon dioxide, and help fight climate change while also protecting soil, regulating water, and preventing floods and landslides; many people, especially indigenous communities, depend on forests for food, medicine, and livelihoods, yet deforestation and illegal logging threaten these vital ecosystems, making it crucial to protect forests through tree planting, stopping illegal logging, responsible management, and everyday actions such as reducing waste, supporting sustainable products, and spreading awareness, since small efforts by many people can make a big difference for the environment.

## Here's a ways to protect forests :

- **Plant Trees**

Reforestation and tree planting help replace the trees that have been cut down and restore damaged ecosystems.

- **Prevent Deforestation**

Support laws and initiatives that stop illegal logging and limit forest clearing for agriculture or construction.

- **Use Sustainable Products**

Choose products certified as eco-friendly or made from sustainably managed forests, like FSC-certified wood and paper.

- **Reduce Waste**

Using less paper and recycling helps reduce the demand for raw forest materials.

- **Support Conservation Programs**

Donate to or volunteer with organizations working to protect forests and wildlife.

- **Raise Awareness**

Educate others about the importance of forests and how to protect them.

**"Protect forests, protect our future."**

# HSE BULLETIN JANUARY 2026 SAFETY AWARENESS AT WORK

BY RISKA OKTAVIANA - CHIEF HSE



**Safety awareness** is about being mindful of our surroundings and daily habits at work. In an office building, most safety risks come from routine activities—walking, using equipment, sharing spaces, or rushing between tasks. Small actions, when done carelessly, can lead to accidents that are actually easy to prevent.

A safe workplace is created when everyone pays attention, not only when something goes wrong.

## Everyday Situations That Need Awareness

In our daily office activities, safety risks may appear in simple forms, such as:

- *Wet or cluttered walkways*
- *Loose cables or personal items left on the floor*
- *Improper use of office or pantry equipment*
- *Ignoring safety signs or building rules*
- *Rushing, multitasking, or being distracted*

*Being aware of these situations helps reduce accidents and keeps the office comfortable for everyone.*

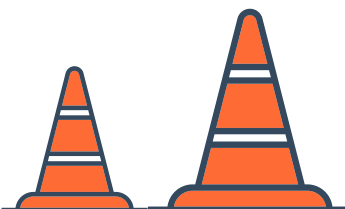
## Simple Safety Awareness Habits

You don't need special training to practice safety—just simple habits:

- *Keep your workspace and shared areas neat*
- *Watch your step, especially in pantry and restroom areas*
- *Use office equipment and appliances properly*
- *Report unsafe conditions instead of ignoring them*
- *Follow building rules meant to protect everyone*
- *Be considerate—your actions may affect others*

## Safety Is a Shared Habit

Safety awareness is not about restrictions—it's about care. When we stay alert and responsible, we help create a workplace where everyone feels safe, respected, and comfortable every day.





# WHAT'S IN THE MOVIE ?

JANUARY 2026

## GREENLAND 2 : MIGRATION



Set after the global devastation of the first film, **Greenland 2: Migration** follows the Garrity family as they are forced to leave the safety of the bunker in Greenland. The outside world they face is no longer just a land of ruins, but a deadly environment filled with uncertainty. John Garrity, together with his wife Allison and their son Nathan, must embark on a long journey across territories shattered by the impact of the comet. Their goal is one: to find a new place that is truly habitable. However, this journey is challenged not only by natural disasters and extreme conditions, but also by human conflicts that arise as resources become increasingly scarce. Along the way, they are confronted with difficult choices that test their morality, family bonds, and the limits of sacrifice in the fight for survival.

## DEAD OF WINTER

**Dead of Winter** follows Barb, a grieving widow who travels to Lake Hilda to fulfill her late husband's final wish. A snowstorm forces her to shelter in a remote cabin, where she encounters a suspicious man. After witnessing him abduct a young woman, Barb discovers the victim is being held captive and realizes she is the only one who can help. Isolated in the frozen wilderness, she must rely on her survival skills and determination to confront the kidnappers, transforming from a grieving widow into a fearless protector. Alone, outnumbered, and cut off from the world, Barb turns grief into resolve as the frozen landscape becomes both her weapon and her battlefield. With time running out, every choice she makes could mean life or death—proving that in the dead of winter, survival belongs to the bold.

