

VOL. 55 · JULY 2025

# CAPITAL PLACE NEWSLETTER

The Official Newsletter of Capital Place Jakarta

## CAPITAL PLACE EID AL ADHA MUBARAK 1446 HIJRIYAH



As part of our Social Responsibility program, Capital Place participated in the Eid Al-Adha celebration by donating two cows for Qurban.



We sincerely hope that this contribution brings joy and support to those in need within our local community, especially the residents of RW 04, Kelurahan Kuningan Barat.

## JULY 2025

Capital Place  
Eid Al Adha **PAGE 01**

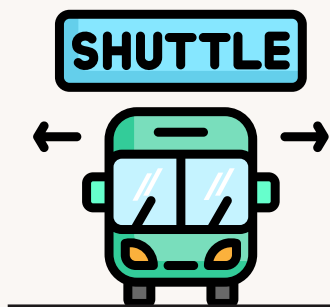
Capital Place  
Shuttle Service **PAGE 02**

Simple ways to go  
Plastic Free everyday **PAGE 05**

HSE Bulletin:  
Housekeeping and  
Office Safert **PAGE 06**

Concierge Recomendations :  
Jakarta New Tables July 2025 **PAGE 08**

What's In The Movie ?  
July 2025 **PAGE 10**



# CAPITAL PLACE

## SHUTTLE SERVICE

Capital Place provides shuttle car service consisting of 2 MPVs (7-seaters) and 2 minivans (14-seaters). The shuttle operates on a rotating schedule every 15 to 20 minutes.

Our shuttle service connects Capital Place with several key locations in the SCBD area, such as Ashta/Grand Lucky and Pacific Place/BEJ. It also offers convenient access to public transportation, with drop-off points at the nearest MRT station, Istora Mandiri.



Below are the license plate numbers of our shuttle vehicles:

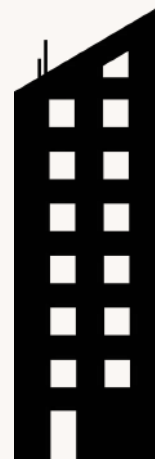
### MPVs (7-seaters)

- B 1885 ROB
- B 1114 VZH

### Minivans (14-seaters)

- B 7204 PAA
- B 7205 PAA

Look out for the smiley on the front window to find our car





# TIME TABLE

CAPITAL PLACE

Morning Service	Pick Up	Time	Drop Off	Time
Shuttle 1	BEJ	07:00hrs	Capital Place	07:10hrs
Shuttle 2	BEJ	07:10hrs	Capital Place	07:20hrs
Shuttle 1	BEJ	07:20hrs	Capital Place	07:30hrs
Shuttle 2	BEJ	07:30hrs	Capital Place	07:40hrs
Shuttle 3	BEJ	07:40hrs	Capital Place	07:55hrs
Shuttle 4	BEJ	07:50hrs	Capital Place	08:05hrs
Shuttle 1	BEJ	08:00hrs	Capital Place	08:10hrs
Shuttle 2	BEJ	08:10hrs	Capital Place	08:20hrs
Shuttle 3	BEJ	08:20hrs	Capital Place	08:35hrs
Shuttle 4	BEJ	08:30hrs	Capital Place	08:45hrs
Shuttle 1	BEJ	08:40hrs	Capital Place	08:50hrs
Shuttle 2	BEJ	08:50hrs	Capital Place	09:00hrs
Shuttle 3	BEJ	09:00hrs	Capital Place	09:15hrs
Shuttle 4	BEJ	09:10hrs	Capital Place	09:25hrs
Shuttle 1	BEJ	09:20hrs	Capital Place	09:30hrs
Shuttle 2	BEJ	09:30hrs	Capital Place	09:40hrs

**No Service from 09:40hrs - 11:00hrs**

Lunch Time Service	Pick Up	Time	Drop Off	Time
Shuttle 1	Capital Place	11:00hrs	Pacific Place	11:10hrs
Shuttle 2	Capital Place	11:10hrs	Pacific Place	11:20hrs
Shuttle 3	Capital Place	11:20hrs	Pacific Place	11:35hrs
Shuttle 4	Capital Place	11:30hrs	Pacific Place	11:45hrs
Shuttle 1	Capital Place	11:40hrs	Pacific Place	11:50hrs
Shuttle 2	Capital Place	11:50hrs	Pacific Place	12:00hrs
Shuttle 3	Capital Place	12:00hrs	Pacific Place	12:15hrs
Shuttle 4	Capital Place	12:10hrs	Pacific Place	12:25hrs
Shuttle 1	Capital Place	12:20hrs	Pacific Place	12:30hrs
Shuttle 2	Capital Place	12:30hrs	Pacific Place	12:40hrs
Shuttle 3	Capital Place	12:40hrs	Pacific Place	12:55hrs
Shuttle 4	Capital Place	12:50hrs	Pacific Place	13:05hrs
Shuttle 1	Capital Place	13:00hrs	Pacific Place	13:10hrs
Shuttle 2	Capital Place	13:10hrs	Pacific Place	13:20hrs
Shuttle 3	Capital Place	13:20hrs	Pacific Place	13:35hrs
Shuttle 4	Capital Place	13:30hrs	Pacific Place	13:45hrs
Shuttle 1	Capital Place	13:40hrs	Pacific Place	13:50hrs
Shuttle 2	Capital Place	13:50hrs	Pacific Place	14:00hrs



# TIME TABLE

CAPITAL PLACE

**No Service from 14:00hrs - 16:00hrs**

Evening Service	Pick Up	Time	Drop Off	Time
Shuttle 3	Capital Place	16:00hrs	BEJ	16:15hrs
Shuttle 4	Capital Place	16:10hrs	BEJ	16:25hrs
Shuttle 1	Capital Place	16:20hrs	BEJ	16:30hrs
Shuttle 2	Capital Place	16:30hrs	BEJ	16:40hrs
Shuttle 3	Capital Place	16:40hrs	BEJ	16:55hrs
Shuttle 4	Capital Place	16:50hrs	BEJ	17:05hrs
Shuttle 1	Capital Place	17:00hrs	BEJ	17:10hrs
Shuttle 2	Capital Place	17:10hrs	BEJ	17:20hrs
Shuttle 3	Capital Place	17:20hrs	BEJ	17:35hrs
Shuttle 4	Capital Place	17:30hrs	BEJ	17:45hrs
Shuttle 1	Capital Place	17:40hrs	BEJ	17:50hrs
Shuttle 2	Capital Place	17:50hrs	BEJ	18:00hrs
Shuttle 3	Capital Place	18:00hrs	BEJ	18:15hrs
Shuttle 4	Capital Place	18:10hrs	BEJ	18:25hrs
Shuttle 1	Capital Place	18:20hrs	BEJ	18:30hrs
Shuttle 2	Capital Place	18:30hrs	BEJ	18:40hrs
Shuttle 3	Capital Place	18:40hrs	BEJ	18:55hrs
Shuttle 4	Capital Place	18:50hrs	BEJ	19:05hrs
Shuttle 1	Capital Place	19:00hrs	BEJ	19:10hrs
Shuttle 2	Capital Place	19:10hrs	BEJ	19:20hrs
Shuttle 3	Capital Place	19:20hrs	BEJ	19:35hrs
Shuttle 4	Capital Place	19:30hrs	BEJ	19:45hrs

Units	Vehicle Type
Shuttle 1	MPV (7-seaters)
Shuttle 2	MPV (7-seaters)
Shuttle 3	Minivan (14-seaters)
Shuttle 4	Minivan (14-seaters)



1. Schedule is based on estimated time only
2. This service will only pick up and drop off at the nominated locations
3. Please be at pick up point ahead of scheduled time, there will be no waiting
4. This service only available to employees of companies residing at Capital Place

# SIMPLE WAYS TO GO PLASTIC FREE EVERY DAY

Plastic pollution is a growing problem. It's estimated that over 11 million tons of plastic enter the ocean every year — harming wildlife, polluting ecosystems, and even ending up in our food and water.

The good news? Going plastic-free is easier than you think. With a few small changes, you can reduce your plastic use and inspire others to do the same.

## 1. Bring Your Own Bag

Avoid plastic bags by keeping a reusable shopping bag in your daily bag or at your desk.

## 2. Pack Your Own Lunch

Instead of ordering food in plastic containers, bring your meal in a reusable lunchbox or glass container.

## 3. Say No to Plastic Straws and Cutlery

Refuse plastic utensils when eating out.

Keep a set of bamboo or stainless-steel cutlery in your bag.

## 4. Choose Products with Less Packaging

Shop for items in bulk, choose bar soap over liquid, and look for refill stations if available.

## DID YOU KNOW?

- By 2050, there could be more plastic than fish in the ocean (by weight).
- Microplastics have been found in human blood, lungs, and even placentas.
- Switching to reusable items can reduce your plastic waste by up to 60%.

Plastic-free living isn't about perfection — it's about progress. Start with one habit and build from there. Your small changes make a big difference.

Let's take the first step toward a cleaner, greener future.





# HOUSEKEEPING & OFFICE SAFETY

BY RISKA OKTAVIANA - CHIEF HSE

A clean, organized, and well-maintained workplace is essential for ensuring safety, productivity, and comfort.

Poor housekeeping increases the risk of slips, trips, electrical hazards, fire incidents, and even pest infestations.

Let's create a safer working environment by applying good housekeeping practices every day.

## Why Housekeeping Matters ?

Effective housekeeping is more than just cleanliness. It includes keeping work areas orderly, maintaining floors and surfaces, properly storing materials, and managing food waste appropriately.

A tidy environment helps prevent injuries, promotes hygiene, and supports everyone's well-being.

## Housekeeping Best Practices in the Office

- **Keep work areas clean and clutter-free**

Clear unnecessary items from desks, shelves, and communal areas. A tidy space helps prevent accidents and improves focus.

- **Do not store items under desks or near electrical panels**

Hindering ventilation or blocking panels can pose fire and electrical hazards.

- **Ensure emergency exits and hallways remain unobstructed**

Avoid placing boxes, trolleys, or bins in evacuation paths.

- **Properly store cleaning equipment and materials**

Keep tools and chemicals in their designated places, labeled and secured.

- **Report spills and leaks immediately**

Wet or sticky floors can lead to slips and also attract pests if not addressed promptly.



# HOUSEKEEPING & OFFICE SAFETY

BY RISKA OKTAVIANA - CHIEF HSE

## Housekeeping Best Practices in the Office

- **Clean up food crumbs and spills, especially in pantry or desk areas**

Food residue not only creates discomfort but can attract insects. Use sealed containers and avoid leaving leftovers overnight.

- **Dispose of trash and recyclables routinely**

Keep bins covered and avoid overflow, particularly in food-related areas, to maintain hygiene and prevent pest attraction.

- **Secure loose cables and wires**

Use proper cable organizers to reduce trip hazards and maintain workspace orderliness.

- **Return shared tools and equipment after use**

Keeping tools in place improves efficiency and safety for all users.

- **Inspect and maintain shared areas (pantry, toilets, storage)**

These spaces should be checked regularly for cleanliness and order, ensuring they remain safe, dry, and pest-free.



## Let's Build a Safer and Cleaner Workplace Together!

When we treat cleanliness as part of our safety culture, we prevent accidents and health risks before they arise. Let's continue to support each other in keeping our workspaces clean, safe, and welcoming every day.



# JAKARTA NEW TABLES: JULY 2025

As we step into the second half of 2025, Jakarta's culinary scene is more vibrant than ever.

This July, the city welcomes an exciting lineup of gastronomic experiences, featuring exclusive restaurants with Michelin-starred chefs and the debut of several buzz-worthy dining and bar destinations. Here's your ultimate guide to the best new tables in Jakarta this July.



## 1. ASA



Nestled in the heart of Menteng, ASA is a sanctuary of refined comfort and all-day indulgence. Rooted in warmth and crafted with elegance, ASA presents elevated comfort food inspired by familiar flavors and contemporary sensibilities. From morning rituals to evening cravings, the all-day dining experience invites guests to savour dishes that feel like home—reimagined with a modern twist.

**Jl Taman Lawang No.1, Menteng, Jakarta 10310**  
**Phone: +628111080383**

## 2. BACCHUS DINING & BAR

BACCHUS Dining & Bar pays homage to Bacchus—the Roman god of wine, revelry, and ecstasy, also known as Dionysus in Greek mythology. With its elegant ambiance and vibrant energy, BACCHUS Dining & Bar invites patrons to experience the timeless allure of Bacchus through inspired cuisine, curated wines, and a lively atmosphere that captures the joy of dining and socializing in the heart of the Menteng area.

**Jalan Dr. GSSJ Ratulangi No.34, Menteng, Jakarta 10350**  
**Phone: +6281188008899**





# JAKARTA NEW TABLES: JULY 2025



## 3. PALALADA

The long-awaited return of PALALADA is finally here, marking a bold comeback in its new home inside SOGO Plaza Senayan. Known for its authentic Indonesian cuisine, PALALADA now pairs its rich culinary heritage with a modern-contemporary interior that exudes calm and sophistication. This rebirth brings a refreshed dining experience.

**Sogo Plaza Senayan, level 5**  
**Jl. Asia Afrika No. 8, Jakarta Pusat,**  
**Jakarta, Indonesia**  
**Phone: +6282261616881**

## 4. THE CROWN BY KIRK WESTAWAY

Fairmont Jakarta proudly introduces The Crown by Kirk Westaway, a distinguished new dining destination set to elevate the city's gastronomy to new heights. Nestled on the 22nd floor, this elegant venue promises a symphony of bold flavours and modern charm, offering an experience that is as refined as it is inviting. With Chef Westaway's acclaimed modern British cuisine at its core, The Crown by Kirk Westaway, crafts a fresh and modern interpretation of beloved British flavours.

**Fairmont Jakarta**  
**Jl Asia Afrika No.8, Jakarta 10270**  
**Phone: +622129703333**





# WHAT'S IN THE MOVIE ? >>>

## JULY 2025



### JURASSIC WORLD

Zora Bennett leads a team of skilled operatives to the most dangerous place on Earth, an island research facility for the original Jurassic Park.

Their mission is to secure genetic material from dinosaurs whose DNA can provide life-saving benefits to mankind. As the top-secret expedition becomes more and more risky, they soon make a sinister, shocking discovery that's been hidden from the world for decades.



### SUPERMAN

Superman must reconcile his alien Kryptonian heritage with his human upbringing as reporter Clark Kent. As the embodiment of truth, justice and the human way he soon finds himself in a world that views these as old-fashioned.

