

VOL. 55 · SEPTEMBER 2023

CAPITAL PLACE NEWSLETTER

The Official Newsletter of Capital Place Jakarta



INDEPENDENCE DAY

WITH

CAPITAL PLACE

Capital Place celebrated Indonesia Independence Day by sharing some traditional snacks and desserts with Tenants, alongside a mini-game for Tenants to win some vouchers.



We thank all Tenants who participated and enlivened the Capital Place Independence Day event on 15 August 2023.

This issue:

Independence Day

PAGE 01

Capital Place New General
Manager

PAGE 02

Jakarta Air Pollution

PAGE 03

How To Reduce Air Pollution

PAGE 04

End Of Trip Facility

PAGE 05

Floor Warden - HSE Bulletin

PAGE 06

City Park in Jakarta -
Recomendation

PAGE 07

What's in The Movie?

PAGE 08

CAPITAL PLACE

GENERAL MANAGER



Mr. Seah Kian Hwee joins Capital Place as the new General Manager on 7 August 2023.

He has extensive experiences in Property Management in Singapore and the last 5 years in Jakarta. His extensive experiences in Property Management will complement the Building Management (BM) to deliver the best services to all Tenants with the assistance of the BM team

Mr. Seah can be contacted through his email address kian.seah@jll.com and mobile phone number +62 812-9553-0581

We are confident that he will be a great addition to Capital Place.

WELCOME TO CAPITAL PLACE, MR. SEAH!



JAKARTA

AIR POLLUTION

Air pollution is contamination of the indoor or outdoor environment by any chemical, physical or biological agent that modifies the natural characteristics of the atmosphere. Household combustion devices, motor vehicles, industrial facilities and forest fires are common sources of air pollution.



The Indonesian capital, which is home to more than 10 million people, has been smothered in “unhealthy” levels of air pollution for several days, according to Swiss air quality technology company IQAir data.

Jakarta air quality for several days is in an unhealthy status. Air pollution in Jakarta climbed to levels about 16 times higher than what the World Health Organization considers safe, turning the sky into toxic gray and placing it in the ranks of the world’s most polluted cities for polluted air.

The IQAir website has ranked Jakarta among the cities with the worst air quality in the world. President Joko Widodo (Jokowi) is working with Jakarta's government to apply the hybrid works.

The government of Jakarta is officially restarting the Work From Home (WFH) for half of the civil servants. This is being done to reduce the air pollution in Jakarta and evade its dangerous impacts to people's health.



HOW TO REDUCE AIR POLLUTION?

"Every little step to reduce air pollution is VERY IMPORTANT!"



Conserve water to reduce energy consumption and reduce water pollution



Use energy efficient appliances and light bulbs



Plant trees and support efforts to preserve green spaces

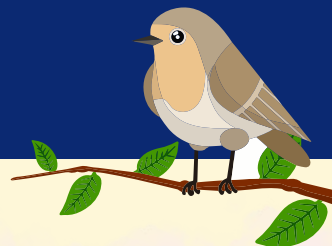


Reduce energy consumption by turning off lights and unplugging electrical appliances when not in use



Use public transportation, carpool, instead of driving alone, walk or use bicycle

PLEASE WEAR A MASK WHEN YOU ARE OUT IN THE OPEN SPACE



END-OF-TRIP FACILITY



Capital Place offers **End-of-Trip** facility for Tenant's employees who want to ride bicycle to work or exercise during the day.

End-of-trip facility is located in Basement 1M area and provides you with showers, toiletries, locker room, and complimentary towel service.



FOR REGISTRATION AND MORE INFORMATION
PLEASE CONTACT OUR CONCIERGE at +6221 2277 5959
or email at concierge@capitalplace.co.id



FLOOR WARDEN

By Nino Aditya - Capital Place Chief HSE



Floor Wardens are assigned to each floor within a building to provide assistance to building occupants and visitors during evacuations and other emergency situations. Floor wardens direct the evacuation of their assigned floor to the nearest emergency exit, prevent individuals from using the elevators, provide pertinent information about individuals remaining inside the building or about hazardous conditions to the Building Coordinator, direct individuals to the assembly area and discourage individuals from re-entering the building until it has been cleared safe to re-enter. Floor Wardens are identifiable by their vests/arm band or other identifications.

DURING AN EVACUATION

- Use your identifications and retrieve the checklist
- Alert all individuals in your assigned area to evacuate
- If it is safe to do so, conduct a quick check, especially washrooms, closed work areas to ensure all individuals have evacuated
- Close (do not lock) all doors as you exit
- At the Assembly Area, provide the Building Coordinator with information about the condition of your floor. This should include information about injured individuals, trapped or missing persons, fire condition, hazardous material spills or other hazards
- Provide timely information to evacuated occupants in the assembly area as directed by the Building Coordinator
- Keep individuals away from the scene of the emergency but never put your own safety at risk.



PRE-EMERGENCY RESPONSIBILITIES

- Review emergency procedures and know the location of your assembly area
- Be familiar with the location of the following emergency equipment:
 - Fire alarm manual call points
 - Fire extinguishers
 - Emergency exits
 - Evacuation routes
 - First aid supplies
 - Emergency supplies
- Identify individuals with mobility challenges
- Attend floor warden training
- Attend hands-on training on the use of fire extinguisher





CITY PARK IN JAKARTA



Jakarta is well known for its vibrant street, skyscrapers, and nightlife. However, amidst the city's hustle and bustle, Jakarta is also home to several beautiful city parks that provide a peaceful atmosphere to escape from the daily hectic activities. These parks are not only beautiful, but they also offer an excellent opportunity to unwind, relax, and rejuvenate.



1. URBAN FOREST CIPETE

Urban Forest Cipete is the newest open space in South Jakarta, with a fairly large green area and lots of shade. Located in the Cipete neighbourhood, it appears to be distinct from the green parks that previously existed in Jakarta. Not only it has green trees, but it also beautiful, luxurious and filled with Instagrammable spots. Since its inception, many people have used it for socialising or WFA (working from anywhere)

Address : Jl. RS. Fatmawati Raya No 45, West Cilandak, South Jakarta.

2. HUTAN KOTA GBK

Hutan kota GBK, also known as GBK Forest Park, is a sprawling green space in Jakarta's largest sports complex, Gelora Bung Karno. The park's extensive trail network makes it an ideal place for joggers, walkers, and cyclists to get some exercise while admiring nature's beauty.

Address : Pintu Tujuh Senayan, Jl. Jendral Sudirman, Tanah Abang, Central Jakarta.



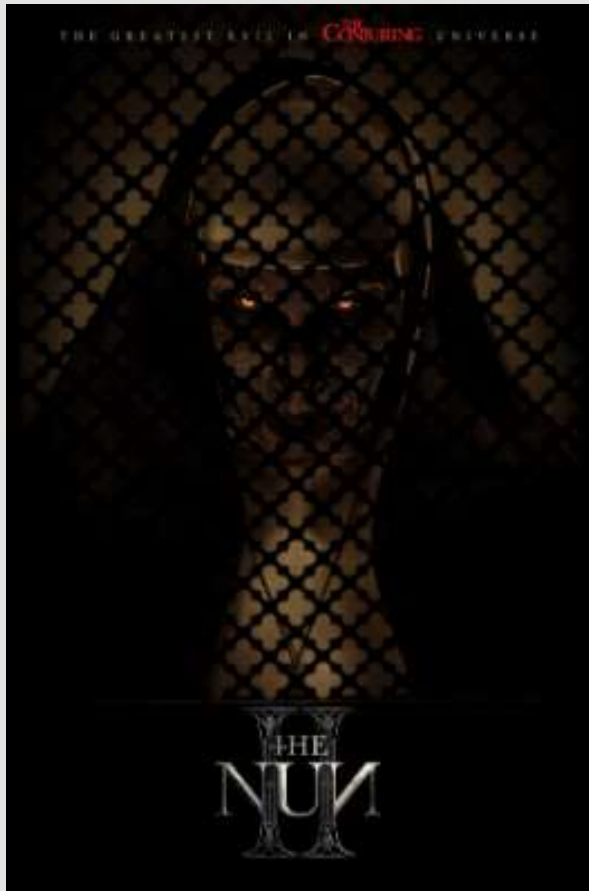
3. TEBET ECO PARK

Tebet Eco Park is a community and environmental park in Tebet. TEP, which covers an area of 7.3 hectares in South Jakarta, is now visible as revitalised green open space.

Address : Jl. Tebet Barat Raya, West Tebet, South Jakarta

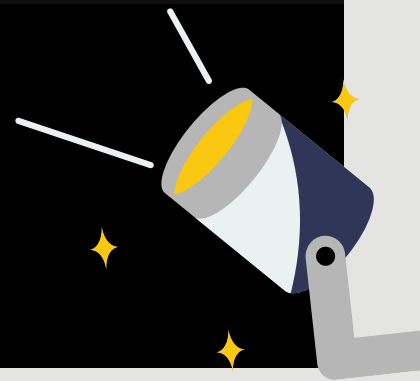
WHAT'S IN THE MOVIE?

SEPTEMBER 2023



THE NUN II

The sequel to the worldwide smash hit follows Sister Irene as she once again comes face-to-face with Valak, the demon nun. A priest is murdered. An evil is spreading.
1956 - France.



SHERINA'S ADVENTURE 2

Even after 22 years, the film Petualangan Sherina still managed to attract the attention of Indonesian film lovers. Miles Films in collaboration with Base Entertainment will be screening Adventure of Sherina 2 in theaters soon. The movie is about Saddam, a true adventurer, reunites with his brave childhood friend, Sherina, when she embarks on a journalistic adventure.

